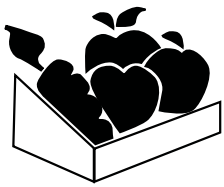


## Works Notice Update: Main Road causeway, Mt Pleasant: Replacement of damaged culverts, construction of a new seawall and road repairs

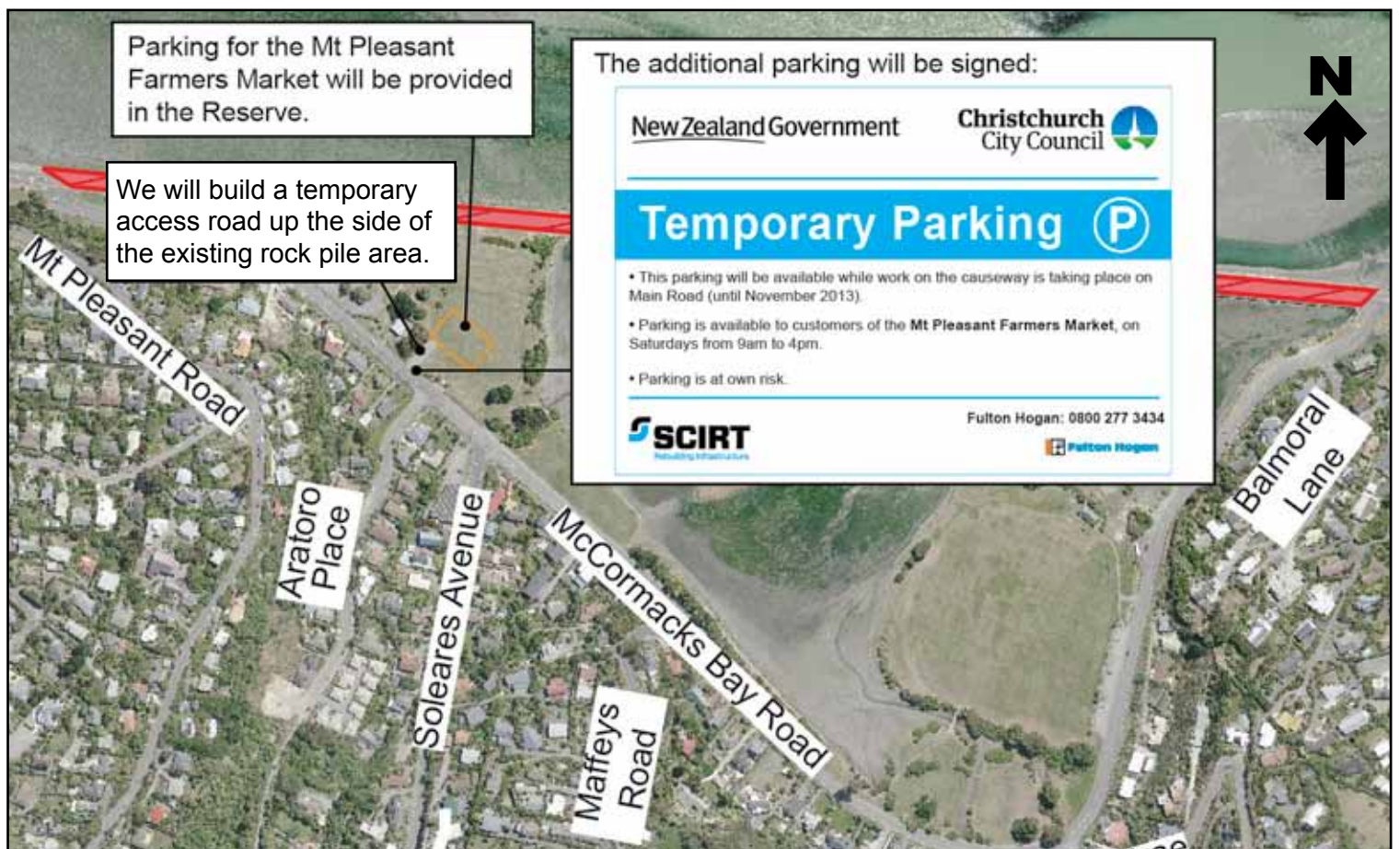
Included in this update is information about the Mt Pleasant Farmers' Market temporary parking area, pedestrian crossing points, the school bus route, restricted parking areas on McCormacks Bay Road and information for cyclists.

### Mt Pleasant Farmers Market:

#### Parking for the Mt Pleasant Farmers Market:



- A temporary car park will be provided for customers of the Mt Pleasant Farmers' Market on Saturday's from 9am to 4pm while works take place on the Main Road causeway.
- The entrance to the temporary carpark will be to the east of the market and community centre, up the side of the existing rock pile area. This driveway will be signed.
- The temporary carpark will be within the McCormacks Bay Reserve.



Sourced from LINZ data, Crown Copyright reserved

Please turn over

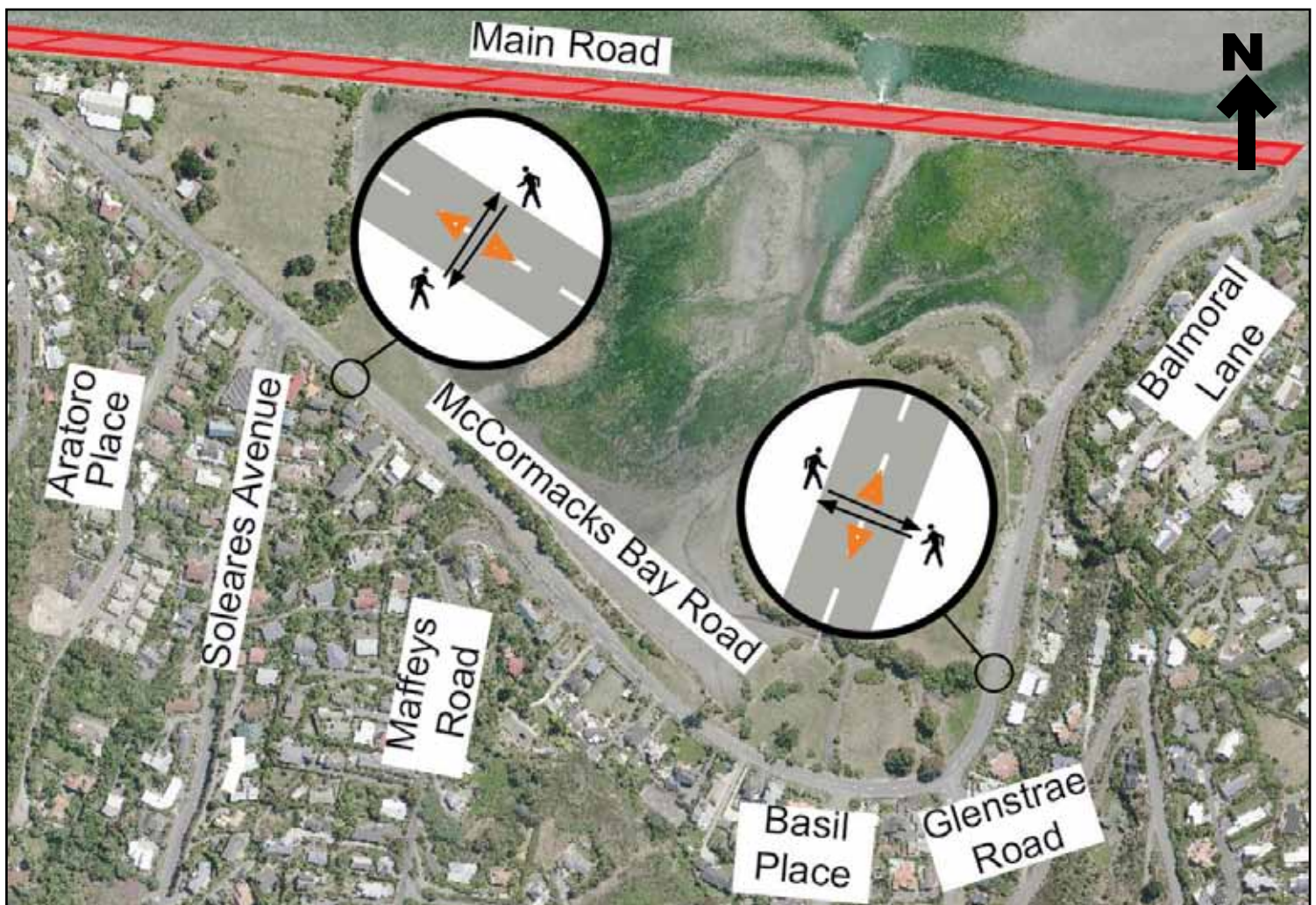
## Pedestrians:

### Pedestrian crossing points on McCormacks Bay Road:



- Two temporary crossing points for pedestrians will be installed on McCormacks Bay Road while works take place on the Main Road causeway.
  - The crossing points will be made with water filled barriers in two triangles in the middle of the road.
  - One crossing point will be installed near Soleares Avenue and the other near the rugby field parking area.
- Pedestrians crossing the road at the crossing points will not have priority over road traffic when using the crossing. The crossing points are there to assist pedestrians in crossing the road safely.
- If you are driving along McCormacks Bay Road, please be aware of these temporary pedestrian crossings and be courteous to pedestrians.

### Where the pedestrian crossing points will be:



Sourced from LINZ data, Crown Copyright reserved



### The school bus route along McCormacks Bay Road:



The school bus route has been discussed with Redcliffs School and GoBus:

- To remove the risk of children crossing McCormacks Bay Road with increased traffic the school bus stops will be on the house side of the McCormacks Bay Road. This is for both the pick up in the morning and drop off in the afternoon.
- We will trial having two stops for the school bus. The bus will first stop at the bus stop between Balmoral Lane and Glenstrae Road (which has been moved closer to Glenstrae Road). The bus will then carry on along McCormacks Bay Road to a bus stop just past Aratoro Place. Both these stops are identified with a blue 'school bus stop' sign. The bus will use the community centre car park where it will turn around before heading back towards Van Asch.
- The drop off for after school care will happen on the community centre car park so the children will also not have to cross the road to enter the centre.
- You can help the school by not stopping or parking in the bus stop area and reducing your speed when passing a stopped bus with the 'school' sign displayed.

### The school bus route:



Sourced from LINZ data, Crown Copyright reserved



## Restricted parking:

### No parking areas along McCormacks Bay Road:



- To accommodate enough width for cars and the cyclists to merge on McCormacks Bay Road we have installed no parking zones where the road narrows.
- These no parking areas will help to improve the two way traffic flow.

### No parking areas:



Sourced from LINZ data, Crown Copyright reserved

## Cyclists:



- To accommodate enough width for the cars and the cyclists to merge we have installed no parking zones where the road narrows.
- There is not enough space to provide a separate cycle lane on McCormacks Bay Road.
- “Look for cyclists” and “Caution, cyclists merging” signs will be put in place on either side of the detour route on McCormacks Bay Road.
- Please be a social driver and look out for cyclists.

**Please visit [www.strongerchristchurch.govt.nz](http://www.strongerchristchurch.govt.nz) for more information about the Main Road causeway project and its construction.**

### Need more information?

**Phone:** 0800 277 34 34 (8.30am- 5.00pm Monday - Friday)

**Email:** [rebuildinfo@fultonhogan.com](mailto:rebuildinfo@fultonhogan.com)

**Website:** Visit [www.strongerchristchurch.govt.nz](http://www.strongerchristchurch.govt.nz)

**Follow us on Twitter:** [twitter.com/scirt\\_info](https://twitter.com/scirt_info)

Sign up to receive email updates on this project by emailing [rebuildinfo@fultonhogan.com](mailto:rebuildinfo@fultonhogan.com) with **Main Road causeway** in the subject line.

Email: [info@scirt.co.nz](mailto:info@scirt.co.nz)  
[www.strongerchristchurch.govt.nz](http://www.strongerchristchurch.govt.nz)



Visit our website and sign up to receive our e-newsletter for the latest information.  
Follow us on Twitter @SCIRT\_info

 **Fulton Hogan**

Programme funded by

**Christchurch City Council**



**New Zealand Government**