

Work notice: The Brae, Mt Pleasant, wastewater investigations and repairs

What	Wastewater pipe investigations and repairs
Where	The Brae, between 1 The Brae and Quarry Road
When	From Tuesday 9 June for around three weeks

For a few hours on Tuesday 9 June:

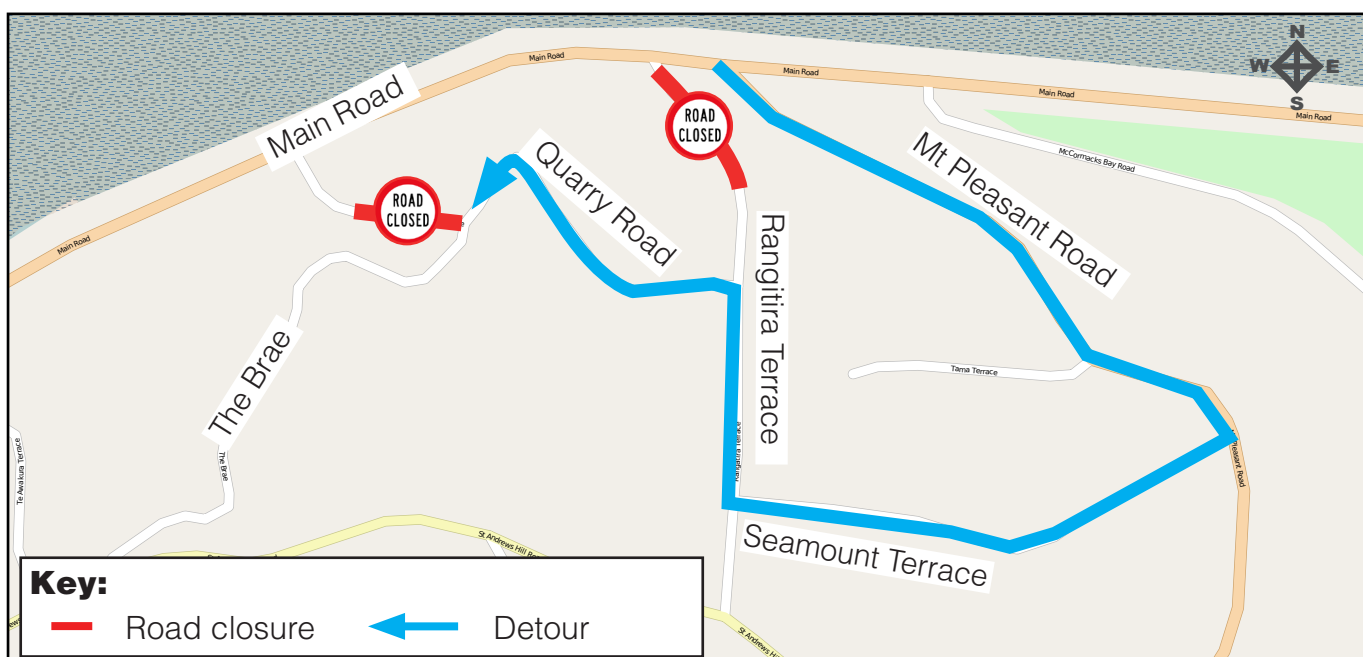
- The crew need to send a camera through the pipe to check the earthquake damage.
- The Brae, from 1 The Brae to the Quarry Road intersection will be closed for a few hours.

From Tuesday 16 June for around three days:

- The crew expect to need to dig down and repair a couple of small sections of the pipe.
- Following this the whole pipe will be lined.
- The Brae, from 1 The Brae to the Quarry Road intersection will be closed from 7.00am - 6.00pm from Tuesday 16 June for around three days.
- Vehicle access to properties may be limited during working hours but will be available overnight.

Traffic Management:

- The Brae, from 1 The Brae to the Quarry Road intersection will be closed during the work.
- Please use Mt Pleasant Road, Seamount Terrace, Rangitira Terrace and Quarry Road or Te Awakura Terrace to access The Brae.
- The Main Road end of Rangitira Terrace is also closed.



Wastewater pipe investigations (camera inside the pipes)

- The video inspection involves sending a small remote-controlled trolley with a camera and lights on it through the main pipe in the road and lateral (house connection) pipes.

Following on from the pipe investigation work we will return to begin pipe lining.



Left A camera trolley and a video of a broken pipe

Pipe lining:

What is pipe lining and how does it work?

Pipe lining is a trenchless method used to repair broken pipes. The inside of a damaged pipe is lined with a new material which strengthens the pipe. Pipe lining can be used when a pipe has cracked or broken as the result of earthquakes.

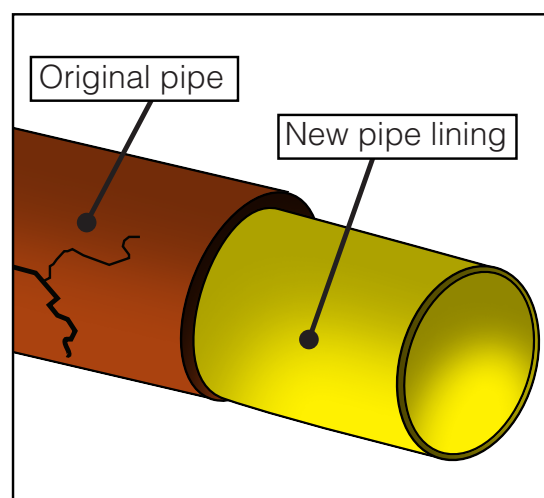
What are the advantages of pipe lining?

Lining damaged pipes removes the need for large trenches which means pipes can be repaired faster and the work has less impact on nearby residents and traffic.

Want to see pipe lining in action?

See our video explaining pipe lining: <http://bit.ly/pipelining>

Diagram of a lined pipe:



General Information:



Please contact Fulton Hogan on 0800 277 3434 if you have any specific access needs: Nurse/doctor visits, Meals on Wheels, or planned works on your property.



Our work hours will be Monday to Saturday between the hours of 7.00am to 6.00pm.



There will be increased noise, dust and vibration levels.



Works will have no planned impact on power, phone or internet, water or gas services. However, the network is still fragile so please be prepared in case there is an unexpected service cut off.



All works are subject to weather and on-site conditions.

Need more information?



Call Fulton Hogan on: 0800 277 34 34 (8.30am- 5.00pm Monday - Friday)



Email Fulton Hogan at: rebuildinfo@fultonhogan.com



Visit the SCIRT website: www.strongerchristchurch.govt.nz



Email: info@scirt.co.nz
www.strongerchristchurch.govt.nz
Follow us on Twitter@SCIRT_info



Programme funded by



New Zealand Government